

OTHER PRODUCTS

Elite Calvary: One Man Charges, One Horde Flees

Screw Extractor Spiral Flute Type

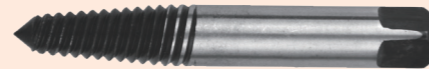
- ◆ Made by chrome vanadium steel, overall heat treatment.
- ◆ Designed to remove broken screws, bolts, threaded parts, pins and pipes, easy and fast.

Simple to use in three steps:
 Step 1: Drill a hole in the broken parts
 Step 2: Insert extractor with a brass hammer
 Step 3: Turn to the left with a tap wrench

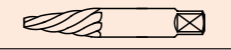
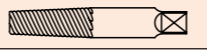
Coarse thread model



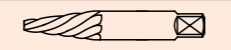

Closely pitched model



Metric Size

Extractor No.	Recommended drill size	Remove bolt/screw size	 	
			Coarse thread model Part Number	Closely pitched model Part Number
1#	2.5mm	M4-M6	Q17ID0010	Q17ID0018
2#	3.5mm	M6-M8	Q17ID0011	Q17ID0019
3#	4.5mm	M8-M11	Q17ID0012	Q17ID0020
4#	6.5mm	M11-M14	Q17ID0013	Q17ID0021
5#	9.0mm	M14-M18	Q17ID0014	Q17ID0022
6#	12.0mm	M18-M24	Q17ID0015	Q17ID0023
7#	15.0mm	M24-M33	Q17ID0016	Q17ID0024
8#	20.0mm	M33-M50	Q17ID0017	Q17ID0025

Imperial Size

Extractor No.	Recommended drill size	Remove bolt/screw size	 	
			Coarse thread model Part Number	Closely pitched model Part Number
1#	5/64"	3/32"-5/32"	Q17ID0026	Q17ID0035
2#	7/64"	5/32"-7/32"	Q17ID0027	Q17ID0036
3#	5/32"	7/32"-9/32"	Q17ID0028	Q17ID0037
4#	1/4"	9/32"-3/8" & 1/8npt	Q17ID0029	Q17ID0038
5#	19/64"	3/8"-5/8" & 1/4npt	Q17ID0030	Q17ID0039
6#	13/32"	5/8"-7/8" & 3/8npt	Q17ID0031	Q17ID0040
7#	17/32"	7/8"-1-1/8" & 1/2npt	Q17ID0032	Q17ID0041
8#	13/16"	1-1/8"-1-3/8" & 3/4npt	Q17ID0033	Q17ID0042
9#	1-1/8"	1-3/8" & above & 1 npt	Q17ID0034	Q17ID0043

5pcs Screw Extractor Set, In Plastic Box Spiral Flute Type

In Plastic Box

- ◆ Group of 5 pcs common size for general applications
- ◆ Plastic box convenient for picking and storage



Application range:	Coarse thread model Part Number	Closely pitched model Part Number
Metric Size: No.1#-2#-3#-4#-5#	Q27CZ0003	Q27CZ0016
Imperial Size: No.1#-2#-3#-4#-5#	Q27CZ0015	Q27CZ0017

6pcs Screw Extractor Set, In Plastic Box Spiral Flute Type

In Plastic Box

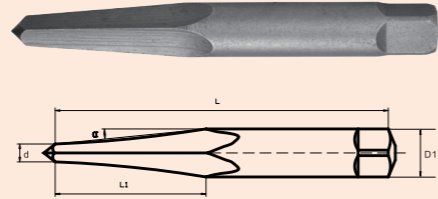
- ◆ Group of 6 pcs common size for general applications
- ◆ Plastic box convenient for picking and storage



Application range:	Coarse thread model Part Number	Closely pitched model Part Number
Metric Size: No.1#-2#-3#-4#-5#-6#	Q27CZ0004	Q27CZ0019
Imperial Size: No.1#-2#-3#-4#-5#-6#	Q27CZ0018	Q27CZ0020

Screw Extractors Straight Flute Type

- ◆ Made by chrome vanadium steel, overall heat treatment.
- ◆ Designed to remove broken screws, bolts, threaded parts, pins and pipes, easy and fast.



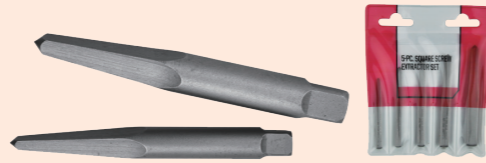
Simple to use in three steps:
 Step 1: Drill a hole in the broken parts
 Step 2: Insert extractor with a brass hammer
 Step 3: Turn to the left with a tap wrench

Extractor No.	Recommended drill size	Remove bolt/screw size	Part Number
1#	9/64"	3/16"-5/16"	Q17ID0044
2#	3/16"	3/8"	Q17ID0045
3#	15/64"	7/16" & 1/8npt	Q17ID0046
4#	5/16"	1/2"-9/16" & 1/4npt	Q17ID0047
5#	3/8"	5/8" & 3/8npt	Q17ID0048
6#	15/32"	3/4" & 1/2npt	Q17ID0049

5pcs Screw Extractor Set, In pouch bag Straight Flute Type

In Pouch Bag

- ◆ Group of 5 pcs common size for general applications
- ◆ Pouch bag convenient for picking and storage



Application range:	Part Number
No.1#-2#-3#-4#-5#	Q27CZ0009

5pcs Screw Extractor Set, In pouch bag Square Type

In Pouch Bag

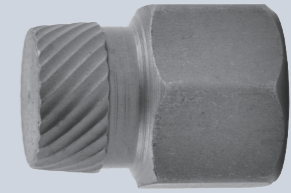
- ◆ Group of 5 pcs common size for general applications
- ◆ Pouch bag convenient for picking and storage



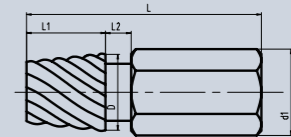
Application range:	Part Number
No.1#-2#-3#-4#-5#	Q27CZ0010

Screw Extractors Multi-Spline Type

- ◆ Made by chrome vanadium steel, overall heat treatment.
- ◆ Designed to remove broken screws, bolts, threaded parts, pins and pipes, easy and fast.



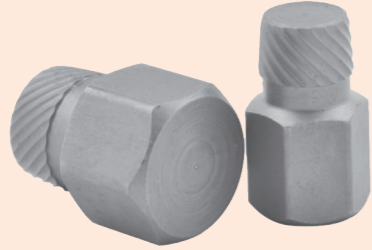
Simple to use in three steps:
 Step 1: Drill a hole in the broken parts
 Step 2: Insert extractor with a brass hammer
 Step 3: Turn to the left with a tap wrench



Extractor No.	Extractor Size	Recommended drill size	Hex Size	Remove bolt/screw size	Part Number
1#	1/8"	1/8"	1/2"	1/4"	Q17ID0059
2#	5/32"	5/32"	1/2"	5/16"	Q17ID0060
3#	3/16"	3/16"	1/2"	3/8"	Q17ID0061
4#	7/32"	7/32"	1/2"	7/16"	Q17ID0062
5#	1/4"	1/4"	1/2"	1/2" & 1/8 pipe	Q17ID0063
6#	9/32"	9/32"	1/2"	9/16"	Q17ID0064
7#	5/16"	5/16"	1/2"	5/8"	Q17ID0065
8#	11/32"	11/32"	1/2"	11/16" & 1/4 pipe	Q17ID0066
9#	3/8"	3/8"	1/2"	3/4"	Q17ID0067
10#	13/32"	13/32"	1/2"	13/16"	Q17ID0068
11#	7/16"	7/16"	5/8"	7/8"	Q17ID0069
12#	15/32"	15/32"	5/8"	15/16" & 3/8 pipe	Q17ID0070
13#	1/2"	1/2"	5/8"	1"	Q17ID0071
14#	17/32"	17/32"	3/4"	1-1/16"	Q17ID0072
15#	9/16"	9/16"	3/4"	1-1/8"	Q17ID0073
16#	19/32"	19/32"	3/4"	1-3/16"	Q17ID0074
17#	5/8"	5/8"	3/4"	1-1/4" & 1/2 pipe	Q17ID0075
18#	21/32"	21/32"	7/8"	1-5/16"	Q17ID0076
19#	11/16"	11/16"	7/8"	1-3/8"	Q17ID0077
20#	23/32"	23/32"	7/8"	1-7/16"	Q17ID0078
21#	3/4"	3/4"	7/8"	1-1/2"	Q17ID0079
22#	25/32"	25/32"	1"	1-9/16"	Q17ID0080
23#	13/16"	13/16"	1"	1-5/8"	Q17ID0081
24#	27/32"	27/32"	1"	1-11/16"	Q17ID0082
25#	7/8"	7/8"	1"	1-3/4"	Q17ID0083

10pcs Multi-Spline Screw Extractor Set

In Blow Molded Case



Application range:	Part Number
No.1 #-2#-3#-4#-5#-6#-7#-8#-9#-10#	Q27CZ0011

25pcs Multi-Spline Screw Extractor Set

In Blow Molded Case



Application range:	Part Number
No. 1 #-2#-3#-4#-5#-6#-7#-8#-9#-10#-11 #-12#-13#	Q27CZ0012
14#-15#-16#-17#-18#-19#-20#-21#-22#-23#-24#-25#	

25pcs Extractor Set Straight Screw Type

- ◆ Extractors made by chrome vanadium steel, overall heat treatment.
- ◆ Designed to remove broken screws and bolts without breaking or jamming
- ◆ Turn broken screws and bolts out and permit highest torque without expansion
- ◆ In blow molded case



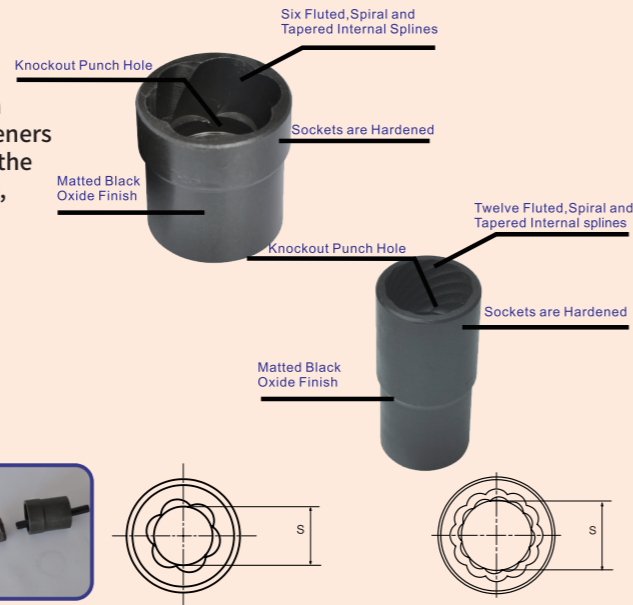
Simple to use in three or four steps:
 Step 1: Select drill guide and drill to centering drill ahole in the broken parts
 Step 2: Enlarge the hole if necessary
 Step 3: Insert extractor with a brass hammer
 Step 4: Set nut then turn to the left with a wrench

Extractor No.	Nut Size	Drill size	Drill Guide ★	Remove bolt/ screw size	Part Number
1#	1/8"	1/8"	1a or 1 b	1/4"	Q27CZ0013
2#	3/16"	1/8" then 3/16"	2a or 2b	5/16"	
3#	1/4"	3/16" then 1/4"	3a or 3b	3/8"	
4#	5/16"	3/16" then 5/16"	4a or 4b	7/16"	
5#	11/32"	1/4" then 11/32"	5a or 5b	1/2"	

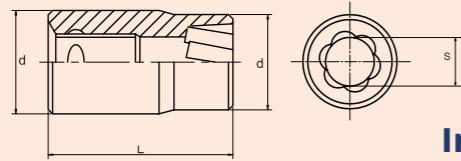
★ Select drill guide according to the O.D. and length of broken screws or broken bolts

Twist Sockets

- ◆ Manufactured from top quality Chromium Molybdenum (CrMo) Steel with good wear resistance and durability.
- ◆ Twist flute design which give the sockets a tight grip to remove the most difficult fasteners
- ◆ Simply place the twist socket on and turn the damaged fasteners off, No more pounding, chisels or torches, safe and fast
- ◆ Available in 1/4", 3/8" and 1/2" drive sizes
- ◆ Work with impact wrench or breaker bar



1/4" Drive Twist Socket 6 Flute



Metric Size

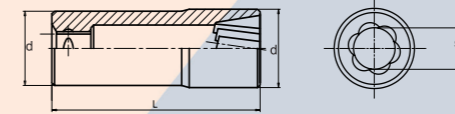
Size s mm	Work End O.D. d mm	O.L. L mm	Black Finish Part Number
8.0	13.2	31.8	Q17IA0038
10.0	15.1	31.8	Q17IA0039
12.0	17.8	31.8	Q17IA0040
14.0	20.1	31.1	Q17IA0041

Imperial Size

Size s inch	Work End O.D. d inch	O.L. L inch	Black Finish Part Number
5/16"	33/64"	1-1/4"	Q17IA0087
3/8"	9/16"	1-1/4"	Q17IA0088
7/16"	41/64"	1-1/4"	Q17IA0089
1/2"	23/32"	1-1/4"	Q17IA0090
9/16"	51/64"	1-7/32"	Q17IA0091



1/4" Drive Deep Twist Socket 6 Flute Deep Wall



Metric Size

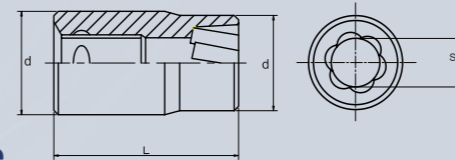
Size s mm	Work End O.D. d mm	O.L. L mm	Black Finish Part Number
8.0	13.2	50.8	Q17IA0063
10.0	15.1	54.0	Q17IA0064
12.0	17.8	54.0	Q17IA0065
14.0	20.1	57.1	Q17IA0066

Imperial Size

Size s inch	Work End O.D. d inch	O.L. L inch	Black Finish Part Number
5/16"	33/64"	2"	Q17IA0092
3/8"	9/16"	2-1/8"	Q17IA0093
7/16"	41/64"	2-1/8"	Q17IA0094
1/2"	23/32"	2-1/4"	Q17IA0095
9/16"	51/64"	2-1/4"	Q17IA0096



3/8" Drive Twist Socket 6 Flute



Metric Size

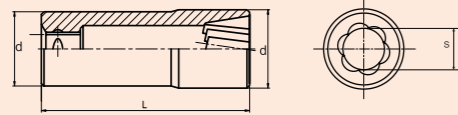
Size s mm	Work End O.D. d mm	O.L. L mm	Black Finish Part Number
8.0	12.7	31.8	Q17IA0023
10.0	15.1	31.8	Q17IA0024
11.0(7/16")	16.4	31.8	Q17IA0025
12.0	17.8	31.8	Q17IA0026
13.0	18.7	31.8	Q17IA0027
14.0	20.1	31.8	Q17IA0028
15.0	21.6	34.9	Q17IA0029
16.0(5/8")	22.7	34.9	Q17IA0030
17.0	23.9	34.9	Q17IA0031
19.0(3/4")	26.5	34.9	Q17IA0032
22.0	30.0	38.1	Q17IA0033

Imperial Size

Size s inch	Work End O.D. d inch	O.L. L inch	Black Finish Part Number
3/8"	9/16"	1-1/4"	Q17IA0034
1/2"	23/32"	1-1/4"	Q17IA0035
9/16"	1 7/32"	1-1/4"	Q17IA0036
11/16"	1"	1-3/8"	Q17IA0037



3/8" Drive Deep Twist Socket 6 Flute Deep Wall



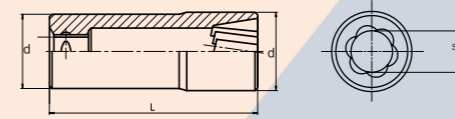
Metric Size

Size s mm	Work End O.D. d mm	O.L. L mm	Black Finish Part Number
10.0	15.1	54.0	Q17IA0049
11.0(7/16")	16.4	54.0	Q17IA0050
12.0	17.8	54.0	Q17IA0051
13.0	18.7	54.0	Q17IA0052
14.0	20.1	57.1	Q17IA0053
15.0	21.6	57.1	Q17IA0054
16.0(5/8")	22.7	60.3	Q17IA0055
17.0	23.9	60.3	Q17IA0056
19.0(3/4")	26.5	60.3	Q17IA0057

Imperial Size

Size s inch	Work End O.D. d inch	O.L. L inch	Black Finish Part Number
3/8"	9/16"	1-1/8"	Q17IA0059
1/2"	23/32"	1-1/8"	Q17IA0060
9/16"	1-7/32"	1-1/4"	Q17IA0061
11/16"	1"	2-3/8"	Q17IA0062

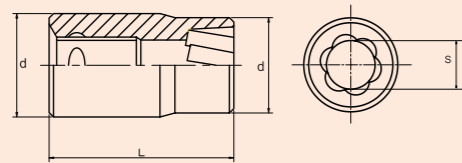
1/2" Drive Deep Twist Socket 6 Flute Deep Wall



Imperial Size

Size s inch	Work End O.D. d inch	O.L. L inch	Black Finish Part Number
3/4"	1-1/32"	2-5/8"	Q17IA0042
13/16"	1-7/64"	2-5/8"	Q17IA0043
7/8"	1-9/64"	2-5/8"	Q17IA0044
15/16"	1-17/64"	2-5/8"	Q17IA0045
1"	1-11/32"	2-5/8"	Q17IA0046

1/2" Drive Twist Socket 6 Flute



Metric Size

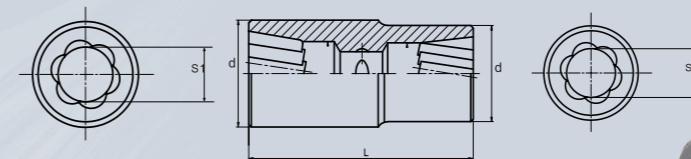
Size s mm	Work End O.D. d mm	O.L. L mm	Black Finish Part Number
10.0	15.0	34.0	Q17IA0002
11.0(7/16")	17.0	34.0	Q17IA0003
12.0	18.0	34.0	Q17IA0004
13.0	19.5	34.0	Q17IA0005
14.0	21.0	34.0	Q17IA0006
15.0	22.0	34.0	Q17IA0007
16.0(5/8")	22.5	34.0	Q17IA0008
17.0	24.5	34.0	Q17IA0009
19.0(3/4")	27.0	34.0	Q17IA0010

Imperial Size

Size s inch	Work End O.D. d inch	O.L. L inch	Black Finish Part Number
3/4"	1-1/32"	1-5/8"	Q17IA0012
13/16"	1-7/64"	1-5/8"	Q17IA0013
7/8"	1-9/64"	1-5/8"	Q17IA0014
15/16"	1-17/64"	1-5/8"	Q17IA0025
1"	1-11/32"	1-5/8"	Q17IA0026
1-3/16"	1-9/16"	1-5/8"	Q17IA0017

1/2" Drive Double End Twist Socket 6 Flute 7/8" & 1"

- ◆ Easily remove 7/8" and 1" damaged OEM & after market locking lug nuts
- ◆ Work with a 1/2" impact wrench or breaker bar

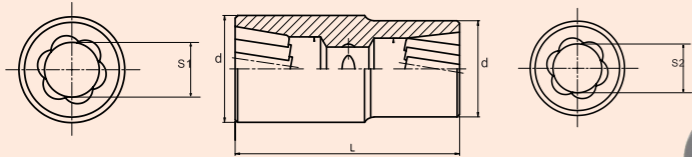


Work End Size s inch	Work End O.D. d inch	O.L. L inch	Black Finish Part Number
7/8"	1-1/4"	2-5/8"	Q17IA0081
1"	1-3/8"		

1/2" Drive Double End Twist Socket

6 Flute 3/4"-19mm & 13/16"-21mm

- ◆ Easily removal of damaged/rounded SAE & Matric 3/4" & 19mm, 13/16" & 21mm lug nuts and the majority of OEM and after market locking lug nuts
- ◆ Work with a 1/2" impact wrench or breaker bar

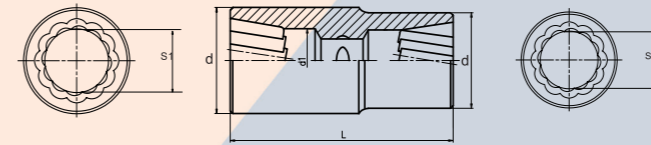


Week End Size s inch	Work End O.D. d inch	O.L. L inch	Black Finish Part Number
3/4"-19mm	1-1/8"	2-5/8"	Q171A0067
13/16"-21mm	1-1/4"		

1/2" Drive Double End Twist Socket

12 Flute 3/4"-19mm & 13/16"-21mm

- ◆ Easily removal of damaged/rounded SAE & Matric 3/4" & 19mm, 13/16", and 21mm lug nuts
- ◆ Work with a 1/2" impact wrench or breaker bar

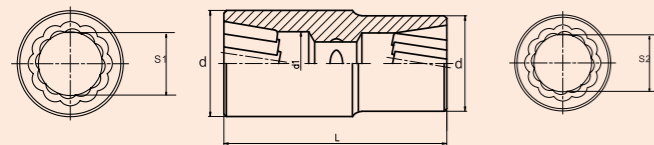


Week End Size s inch	Work End O.D. d inch	O.L. L inch	Black Finish Part Number
3/4"-19mm	1-1/8"	2-5/8"	Q171A0068
13/16"-21mm	1-3/16"		

1/2" Drive Double End Twist Socket

12 Flute 7/8" & 1"

- ◆ Easily remove 7/8" and 1" damaged OEM & after market locking lug nuts
- ◆ Work with a 1/2" impact wrench or breaker bar

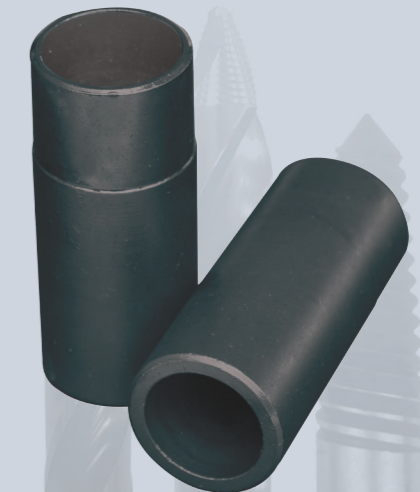
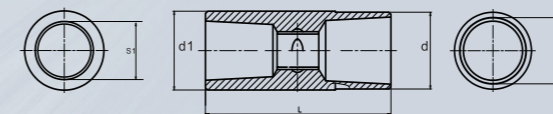


Week End Size s inch	Work End O.D. d inch	O.L. L inch	Black Finish Part Number
7/8"	1-13/64"	2-5/8"	Q171A0069
1"	1-19/64"		

1/2" Drive Double End Endocone Socket

Endocone 3/4"-19mm & 13/16"

- ◆ Easily removal of damaged/rounded SAE & Matric 3/4" & 19mm, 13/16", and 21mm lug nuts and the majority of OEM and after market locking lug nuts
- ◆ Work with a 1/2" impact wrench or breaker bar



Week End Size s inch	Work End O.D. d inch	O.L. L inch	Black Finish Part Number
3/4"-19mm	1-1/4"	2-5/8"	Q171A0071
13/16"	1-1/4"		

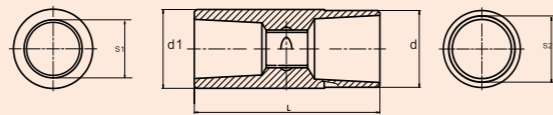
1/2" Drive Double End Thin Wall Endocone Socket

Thin Wall Endocone 3/4"-19mm&13/16"

- ◆ Easily removal of damaged/rounded SAE & Metric 3/4" & 19mm, 13/16", and 21mm lug nuts and the majority of OEM and after market locking lug nuts
- ◆ The thin wall allow for removal of lug nuts on specialty wheels and tight tolerances
- ◆ Work with a 1/2" impact wrench or breaker bar



Work End Size s inch	Work End O.D. d inch	O.L. L inch	Black Finish Part Number
3/4"-19mm	1-1/32"	2-1/2"	Q171A0070
13/16"	1-1/16"		



10pcs 3/8" Drive Twist Socket Set

6 Flute

In Blow Molded Case With Punch

- ◆ Group of 10 pcs common size for general Applications
- ◆ Blow molded case convenient for picking and storage

Size s mm	Work End O.D. d mm	O.L. L mm	Black Finish Part Number
10.0	15.1	31.8	Q27CA0004
11.0	16.4	31.8	
12.0	17.8	31.8	
13.0	18.7	31.8	
14.0	20.1	31.8	
15.0	21.6	34.9	
16.0	22.7	34.9	
17.0	23.9	34.9	
19.0	26.5	34.9	



10pcs 3/8" Drive Twist Socket Set

6 Flute

In Plastic Box With Punch

- ◆ Group of 10 pcs common size for general applications
- ◆ Plastic Box convenient for picking and storage

Size s mm	Work End O.D. d mm	O.L. L mm	Black Finish Part Number
10.0	15.1	31.8	Q27CA0006
11.0	16.4	31.8	
12.0	17.8	31.8	
13.0	18.7	31.8	
14.0	20.1	31.8	
15.0	21.6	34.9	
16.0	22.7	34.9	
17.0	23.9	34.9	
19.0	26.5	34.9	



15pcs 1/2" Drive Twist Socket Set 6 Flute

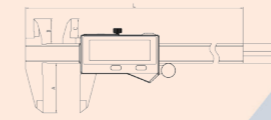
In Blow Molded Case With Punch

- ◆ Group of 15 pcs common size for general Applications
- ◆ Blow molded case convenient for picking and storage

Size s	Work End O.D. d	O.L. L	Black Finish Part Number
10.0mm	15.1mm	31.8mm	Q27CA0005
11.0mm	16.4mm	31.8mm	
12.0mm	17.8mm	31.8mm	
13.0mm	18.7mm	31.8mm	
14.0mm	20.1mm	31.8mm	
15.0mm	21.6mm	34.9mm	
16.0mm	22.7mm	34.9mm	
17.0mm	23.9mm	22.7mm	
3/4"	1-1/32"	1-5/8"	
13/16"	1-7/67"	1-5/8"	
7/8"	1-9/64"	1-5/8"	
15/16"	1-17/64"	1-5/8"	
1"	1-11/32"	1-5/8"	
1-3/16"	1 9/16"	1-5/8"	



IP67 Water-Proof Digital Caliper with inductive measuring system



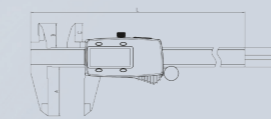
Feature

- ◆ Inductive measuring system
- ◆ IP67 protection grade, caliper can work reliably in hard environment
- ◆ 3V Lithium battery CR2032, battery life >1 year
- ◆ Built in wireless transmission (optional)
- ◆ Resolution 0.001mm, accuracy 5μm in each 1mm

	A(mm)	B(mm)	C(mm)	L(mm)
0-100mm	40	20	15.5	185
0-150mm	40	20	15.5	235
0-200mm	50	24	19.5	287
0-300mm	60	26	21.5	390

SPEC	Resolution	Accuracy(Tolerance Range)	Part Number
0-100mm/0-4"	0.001mm/0.00005"	0.010mm/0.0004"	Q152BC0988
0-150mm/0-6"	0.001mm/0.00005"	0.010mm/0.0004"	Q152BC0989
0-200mm/0-8"	0.001mm/0.00005"	0.020mm/0.0008"	Q152BC0990
0-300mm/0-12"	0.001mm/0.00005"	0.020mm/0.0008"	Q152BC0991
0-100mm/0-4"	0.001mm/0.00005"	0.010mm/0.0004"	Q152BC0992
0-150mm/0-6"	0.001mm/0.00005"	0.010mm/0.0004"	Q152BC0993
0-200mm/0-8"	0.001mm/0.00005"	0.020mm/0.0008"	Q152BC0994
0-300mm/0-12"	0.001mm/0.00005"	0.020mm/0.0008"	Q152BC0995

IP54 Digital Caliper



Feature

- ◆ Incremental capacitive measurement system
- ◆ Glass scale
- ◆ IP54 Protection grade
- ◆ 3V Lithium battery CR2032, battery life >1 year
- ◆ Large display
- ◆ Resolution 0.005mm

	A(mm)	B(mm)	C(mm)	L(mm)
0-100mm	40	20	15.5	185
0-150mm	40	20	15.5	235
0-200mm	50	24	19.5	287
0-300mm	60	26	21.5	390

SPEC	Resolution	Accuracy(Tolerance Range)	Part Number
0-100mm/0-4"	0.005mm/0.0005"	0.02mm/0.001"	Q152BC0996
0-150mm/0-6"	0.005mm/0.0005"	0.02mm/0.001"	Q152BC0997
0-200mm/0-8"	0.005mm/0.0005"	0.03mm/0.0015"	Q152BC0998
0-300mm/0-12"	0.005mm/0.0005"	0.03mm/0.0015"	Q152BC0999

Two-sided Laser Digital Inclinometer

Feature

- ◆ Buttons: on/off, zero, data hold, laser switch
- ◆ Angle and slope conversion
- ◆ Absolute and relative measurements are available
- ◆ Automatic power off in 3 minutes
- ◆ With powerful magnet, the square is rechargeable
- ◆ Operating Temperature: -10~50° C
- ◆ Battery 3.7V lithium battery
- ◆ Multiple application scopes
- ◆ The application range is wide, and the diversified use requirements are met.



Technical Data

Model	Range	Accuracy	Resoluton	Repeatability	Magnets	Part Number
5341-90	4°90°	±0.2°	0.05°	0.1°	magnets on	Q1511LC0999
					4 surfaces	

Magnetic Base With Dial Indicator and probes set



Description	Part Number
<ul style="list-style-type: none"> ◆ Magnetic base with on/off switch ◆ Branch pole with fine adjustment ◆ Clamp hole: dia8&4mm(optional:dia8&6mm or dia3/8") ◆ Tapping hole:M8X1.25MM ◆ Magnetic force: 60kg/80kg ◆ Dial indicator:0-10mm,0.01mm ◆ Probes have 22 styles for you to choose ◆ With high quality plastic box(red or blue) 	Q272BA0999

Family Bucket of Tools



Content	Part Number
3pcs Two Flute HSS Step Drill , Cylindrical Shank	Q27AZ0999
6pcs 90° Three Flute Countersinks Sets , Hexagon Shank	
4pcs 90° Zero Flute Deburring Countersinks Sets, Cylindrical Shank	
5pcs Screw Extractor Set, Spiral Flute Type	
5pcs Metric HSS Drill	
4 pcs 1/4" Drive Twist Socket, 6 Flute	

STEP DRILL

Two Flute HSS Step Drills, Cylindrical Shank

Contents				
Drilling Range	Steps	Description mm	Overall Length L1 mm	Shank Ø d3 mm
4-12	9	4-5-6-7-8-9-10-11-12	65	6
4-20	9	4-6-8-10-12-14-16-18-20	75	8
4-30	14	4-6-8-10-12-14-16-18-20-22-24-26-28-30	100	10

COUNTERSINKS

90° Three Flute Countersinks, Hexagon Shank

Max d1 mm	Max d3 mm	Overall Length L1 mm	Shank d2 mm
6.3	1.5	30	6.35
8.3	2.0	31	6.35
10.4	2.5	33	6.35
12.4	2.8	34	8.35
16.5	3.2	37	6.35
20.5	3.5	41	6.35

90° Zero Flute Deburring Countersinks, Cylindrical Shank

Size mm	Head diam mm	Shank mm	Overall Length mm
2-5	10.0	6	45
5-10	14.0	6	48
10-15	21.0	8	65
15-20	28.0	10	85

EXTEACTOR

Screw Extractor, Spiral Flute Type

Extractor No.
Metric Size No.1#-2#-3#-4#-5#

DRILL

Metric HSS Drill

Diameter (mm)	Dec. Equiv.	Flute Length (mm)	Overall Length (mm)
4	0.1575	43	75
6	0.2362	57	93
8	0.315	75	117
10	0.3937	87	133
12	0.4724	101	151

TWIST SOCKETS

1/4" Drive Twist Socket, 6 Flute

Size s mm	Work End O.D. d mm	O.L. L mm
9	14.3	31.8
10	15.1	31.8
11	16.3	31.8
12	17.8	31.8



TQ Cutting Tool Industry CO., LTD.

Confidence in quality, crafted with pride
Artisan's spirit, customers our guide

TQ Cutting Tool Industry CO.,LTD

No.130,Gongye 11th Rd., Dali Dist., Taichung City 41280, Taiwan(R.O.C)

Tel:+886-4-2491-5355 Fax:+886-4-2491-5177

www.tqcutting.com